

"Complete
Building Solutions
Under One Roof"

www.emeronaura.com



INDEX

- 01** | ABOUT US
- 02** | OUR PRODUCT PORTFOLIO
- 03** | SEALANTS & ADHESIVES
- 04** | FIRESTOPPING SOLUTIONS
- 05** | FIRE RETARDANT AND PROTECTIVE COATINGS
- 06** | WATERPROOFING SOLUTIONS
- 07** | WATER STOP SOLUTIONS
- 08** | UPVC/PVC/EPDM EXTRUSION PROFILES



ABOUT **US**

Emeron Aura Building Materials Trading L.L.C. is an ISO 9001:2015 certified company dedicated to delivering high-quality and reliable building material solutions across the UAE and GCC. We supply a comprehensive range of products—from structural and finishing materials to MEP, safety, and fire protection solutions—ensuring durability, performance, and value for every project.

With expert technical support, competitive pricing, and a customer-first approach, we continue to serve as a trusted partner to contractors, developers, and industry professionals.

MISSION

To consistently deliver quality building materials with integrity, efficiency, and service excellence.

VISION

To be the region's most trusted and innovative supplier of sustainable building material solutions.

OUR PRODUCT PORTFOLIO

SEALANTS & ADHESIVES

Our range includes Silicone Sealants (Acetoxy, Neutral Cure), Acrylic Sealants, Polyurethane (PU) Sealants, MS Polymer Hybrid Sealants, Butyl Rubber Sealants, Specialized Fire-Rated Sealants (Intumescent, Fire Acrylic, Fire Silicone) and specialty construction adhesives. These products deliver superior bonding, sealing, flexibility, weather resistance, and long-lasting performance for indoor and outdoor applications.



PU FOAMS & GAP FILLING SOLUTIONS

High-performance polyurethane foams for sealing, filling gaps, thermal insulation, and soundproofing. Available in fire-rated, general-purpose, and high-density variants to meet diverse site requirements.



FIRESTOPPING SYSTEMS

Comprehensive passive fire protection solutions including intumescent sealants, fire-rated foams, collars, wraps, boards, putties, and reinjectable hoses. Engineered to seal penetrations and joints, prevent smoke and flame spread, and ensure compliance with civil defense standards.



FIRE PROOFING & PROTECTIVE COATINGS

A complete range of fire-resistant and anti-corrosive coatings, thermal-barrier coatings, steel protection systems, and industrial protective finishes designed for enhanced durability and safety.



WATERPROOFING & CONSTRUCTION CHEMICALS

Solutions designed for structural protection, moisture resistance, and long-term durability including Liquid Membranes, Cementitious Waterproofing, Floor Coatings, Anti-Carbonation Coatings, Epoxy & Polyurethane Systems, Concrete Repair Compounds, Grouts & Chemical Anchors.



WATER STOPPING SYSTEMS

Critical solutions for preventing water ingress in concrete structures including Re-injectable Hoses, PVC Waterstops, Rubber Waterstops.



EXTRUDED & GASKET SOLUTIONS

Precision-engineered sealing systems for industrial, construction, and façade applications including wide range of EPDM Gaskets, Silicone Gaskets, Self-Adhesive Gaskets, Custom Extruded Rubber Profiles, Weather Seals & Door/Window Gaskets





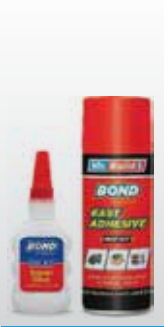
Silicone & Acrylic Sealants



Fire Stop Sealant



Water Proofing Coating



MDF Kit



Polysulphide Sealants



Contact Adhesive



Polyurethane Foam



Adhesives



**ARTISTIC
JOURNEY**
THE ADHESIVE FOR YOUR



BOND SET

BOND TITE

RESIBOND

resitape

SOLVOBOND

FILLX

vetra

Nullifire



FB750
Intubatt Coated



ETA 17/0392

APPROVAL N° CF5378



FR270
Intucompound
Fire Mortar



ETA 17/0392

APPROVAL N° CF5378



FS702
Intumastic Fire
Resistant Acrylic



ETA 17/0392



FP170
Intucollar Intumescent
Pipe Collar



ETA 17/0392

APPROVAL N° CF5378



FS703
Fire Resistant Silicon
Sealant



ETA 17/0392

APPROVAL N° CF5378



FS709
HP Intumescent
Sealant



ETA 17/0392

APPROVAL N° CF5378



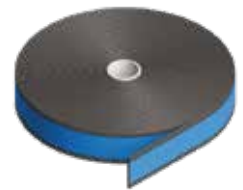
FF197
Fire Rated PU
Construction Foam



ETA 17/0392



APPROVAL N° CF5378



FP302
Intustrap Intumescent
Strap



ETA 17/0392

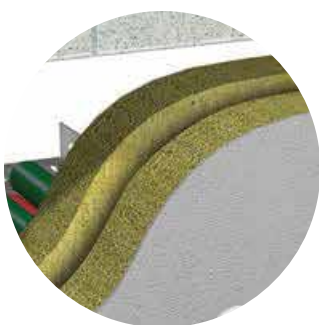
APPROVAL N° CF5378



Product's Range with Complete Smart Solution in Firestop Systems



Nullifire manufactures a comprehensive range of fire stopping and fire resistant production that cover an extremely wide range of construction application.



penetration openings through compartment wall (flexible or non flexible construction)



Penetration Opening in Floors (Concrete, Timber or Membrane Construction)



Combustible Penetration Services



Non-Combustible Penetration Services and cable Management Systems



Linear Seals, Movement Heads and Deflection Details



Slab Edge Cladding and External Facade Solutions



FIRESTOPPING SOLUTIONS

Committed to protecting life safety

Comprehensive Solutions

Once fire has started, containing it to the area of origin allows occupants to find safe passage to emergency exits and first responders to get into the building to assist with evacuation before working to extinguish the fire. Buildings are constructed with fire-rated walls and floors to allow these compartments to be created, but joints between assemblies or penetrations in assemblies can negate the protection they were designed to provide. The assembly may remain intact, but the flames and deadly gasses simply pass through unsealed joints and penetrations to spread throughout the building.

For more than 25 years, Tremco has been dedicated to making the built environment safer for occupants by providing complete building envelope protection solutions against fire, water, sound and air covering the foundation through the roof. We provide an innovative and economical firestop product line coupled with experienced sales and technical representatives who work with designers and contractors to ensure optimal solutions for specific applications in today's construction.

Features & Benefits

- Firestopping systems - The TREstop® line of fire protection products features sealants, Intumescent, field-fabricated devices and forming material with more than 400 independently tested fire-rated systems for through penetrations and joints.
- Engineering judgments - Our experience, from building codes through installation, enables engineering judgments for specific applications.
- Sales support - From assistance with submittal packages to general firestopping or installation training, Tremco provides the assistance and support you need.

Product Selection

TREMstop Sealants

- Acrylic Gun Grade
- Acrylic Spray
- Fyre-sil Gun Grade
- Fyre-sill Self - Leveling
- Smoke & Sound
- Smoke & Sound Spray

TREMstop Intumescent

- Moldable Putty
- Superstrip

TREMstop Sealants

- Mortar
- Master Collar Roll
- FS Blanket



		Smoke Partition Joints & Penetrations	Fire-Rated Assembly Smoke Partition Through Assembly Joints (ASTM E 1966/UL2079, CAN/ ULC-S115)	Fire-Rated Assembly Through Penetrations (ASTM E 814/UL1429, CAN/ ULC-S115)
FIRESTOP PRODUCTS	TREMstop Acrylic	✓	✓	✓
	TREMstop Acrylic SP	✓	✓	
	TREMstop Fyre-Sil	✓	✓	✓
	TREMstop Fyre-Sil SL	✓	✓	✓
	TREMstop Smoke & Sound	✓		
	TREMstop Smoke & Sound SP	✓		
	TREMstop SuperStrip			✓
	TREMstop Fire Mortar		✓	✓
	TREMstop MP			✓
	TREMstop FS Blanket		✓	✓
POLYURETHANE PRODUCTS	Dymonic® 100	✓	✓	
	Dymonic® 240 FC	✓	✓	
	Vulkem® 45 SSL	✓	✓	
HYBRID PRODUCTS	Dymonic FC		✓	

Due to the varying on-site conditions, this chart should be used only as a

Fire Retardant and Protective Coating



Fire Retardant Paint



Anti Corrosion Paint



Concrete Protective Paint



Kristal Ultima- Heat Guard
Heat Resistant Paint



Thermal Insulation Paint



Metal Protection Paint



Kristal Ultima- Concrete
Pavers Lacquer Polish Gloss Coat

Waterproofing

Our advanced waterproofing systems are designed to protect buildings and structures from water ingress, leakage and corrosion - ensuring long term durability strength and performance. With tailored solutions for every surface and environment, we help extend the life and reliability of your property.

KEY APPLICATION:

- **Roofs:** Protects against rainwater leakage
- **Basements:** Prevents groundwater seepage
- **Bathrooms & Kitchens:** shield interiors from moisture damage
- **Foundations & Tanks:** Ensure watertight structural protection

MAIN WATERPROOFING SYSTEMS



Cementitious
Waterproofing



Liquid Waterproofing
Membrane



Bituminous
Waterproofing



Polyurethane
Waterproofing



EPDM / TPO / PVC
Membranes



Injection Grouting



Combo Roof
Waterproofing



Polyurea
Waterproofing

Floor Coating

Durable protective coatings designed to enhance the strength, appearance, and safety of floors in industrial, commercial, and residential spaces

Protects against abrasion, chemicals, and heavy traffic

Improves appearance and cleanliness

Adds slip resistance for enhanced safety

MAIN TYPES



Epoxy Coating

Durable and chemical-resistant — ideal for warehouses, factories, and garages.



Polyurethane Coating

Flexible and UV-resistant — suitable for both indoor and outdoor areas.



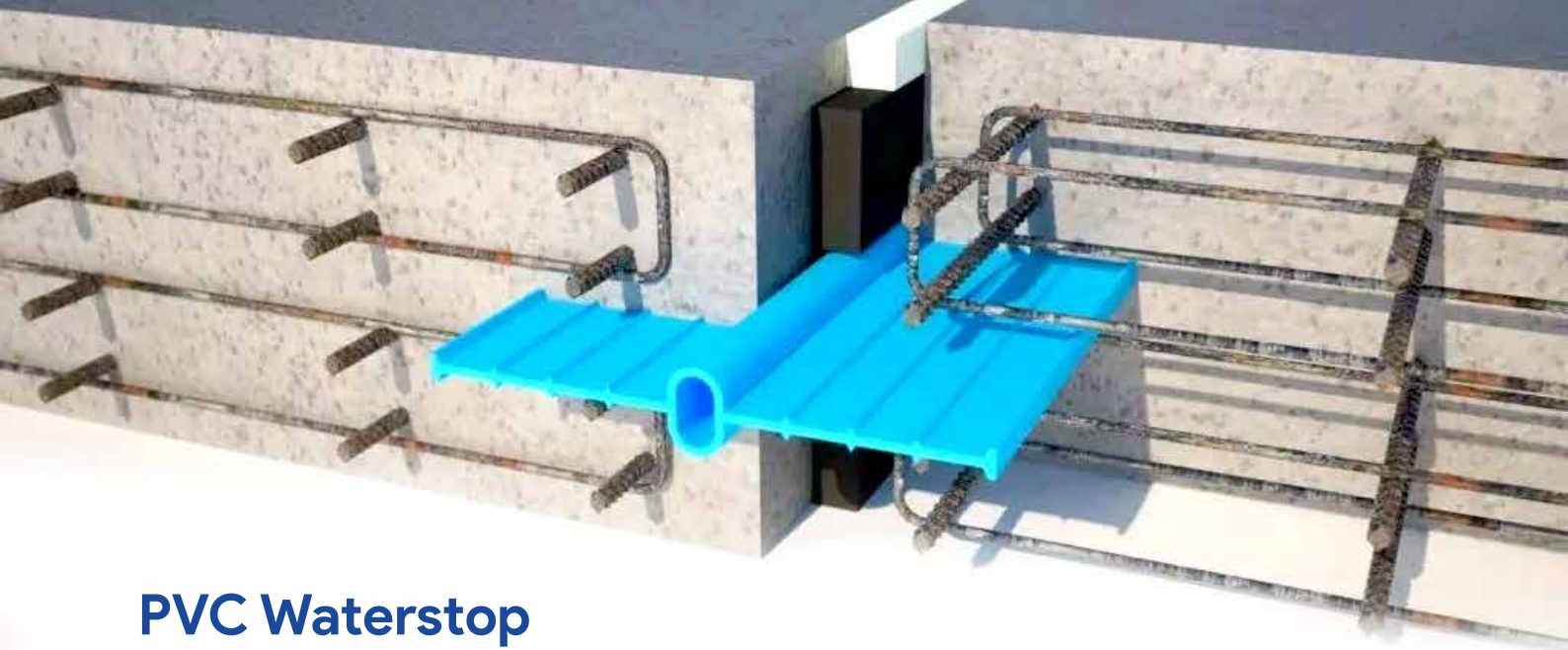
Polyaspartic Coating

Fast-curing and UV-stable — perfect for decorative, high-traffic floors.



Cementitious Urethane

Heavy-duty and heat-resistant — ideal for food processing and industrial zones



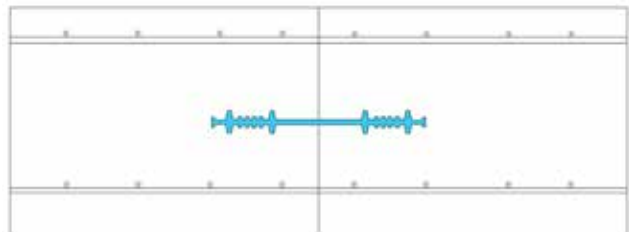
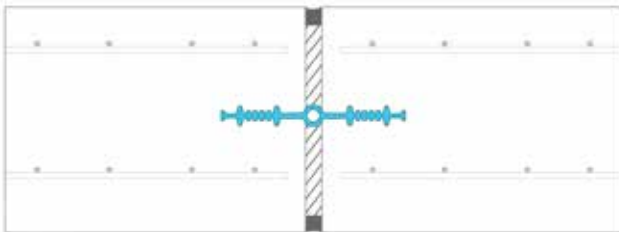
PVC Waterstop

Pvc (Polyvinyl Chloride) waterstops are flexible strips embedded in concrete to prevent the passage of water through construction or expansion joints.

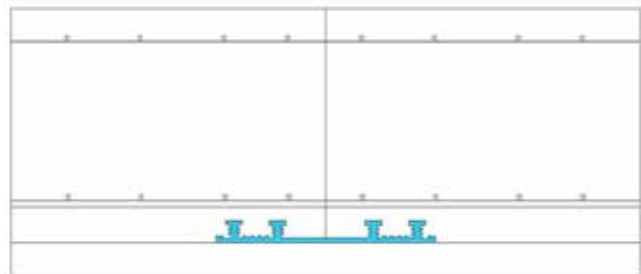
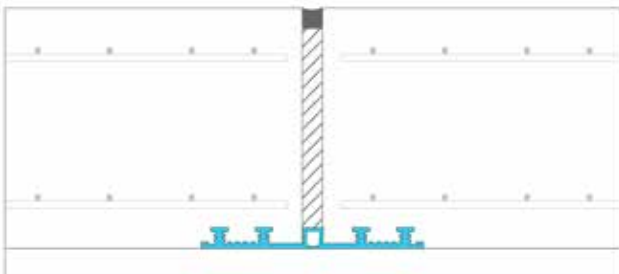
EXPANSION JOINT

CONSTRUCTION JOINTS

STANDARD DETAIL OF WALL APPLICATIONS



STANDARD DETAIL OF GROUND SLAB APPLICATIONS



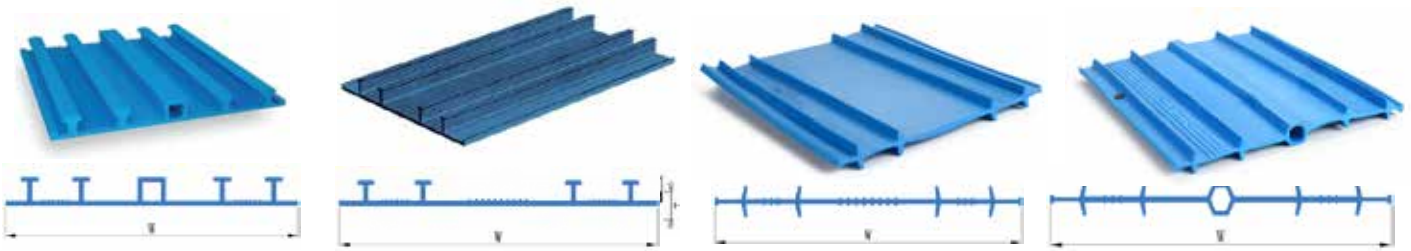
FUNCTIONS:

- Water Sealing at construction and expansion joints in concrete.
- Common in Basements, Water Tanks, Tunnels and Retaining Walls.
- For Facade Systems, Used at joints between concrete slabs and facade Elements to prevent water ingress.



Types:

- **Centerbulb:** For expansion joints (Can accommodate movement)
- **Ribbed with Centerbulb:** For both sealing and accommodating movements.
- **Flat Ribbed:** For construction joints (Less movement expected)



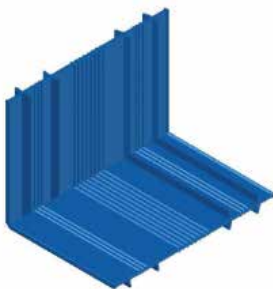
FLAT - L



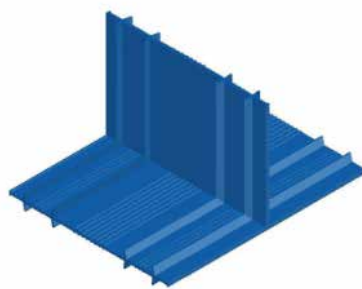
FLAT - T



FLAT - X



VERTICAL - L



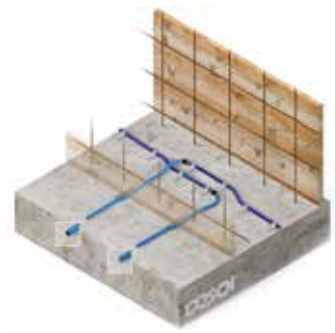
VERTICAL - T

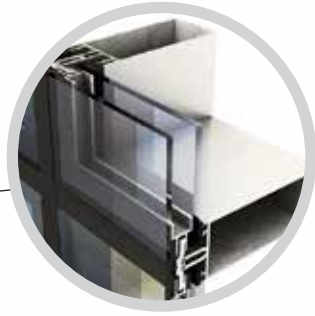


VERTICAL - X

Re-injectable Hose

Re-injectable hose systems are used in concrete construction to ensure long-term waterproofing. These hoses allow grout or resin to be injected into cracks or joints even after concrete is cured, providing an effective solution for basements, tunnels, water tanks, lift pits and foundations.





UPVC/PVC EXTRUSION PROFILES

Pvc rigid profiles for aluminium facade systems are specialized components used in architectural and construction applications. these profiles serve various functional and aesthetic purposes in the installation and performance of aluminium facade systems. here's a breakdown of what they are, where they're used, and why they matter:



ROLE IN ALUMINIUM FACADE SYSTEMS

In Aluminium facade systems, PVC rigid profiles are used to:

- **THERMAL INSULATION**

Used as thermal breaks between aluminium elements to reduce heat transfer and improved energy efficiency.

- **SEALING & WATERPROOFING**

Act as gaskets or seals between aluminium frame components to ensure water and air tightness.

- **SPACER OR COVER PROFILES**

Used as spacers between panels or as decorative cover strips to hide fasteners and provide clean lines.

- **GLAZING SUPPORTS**

Serve as setting blocks or edge protection for glass planes within the aluminium structure

KEY ADVANTAGES

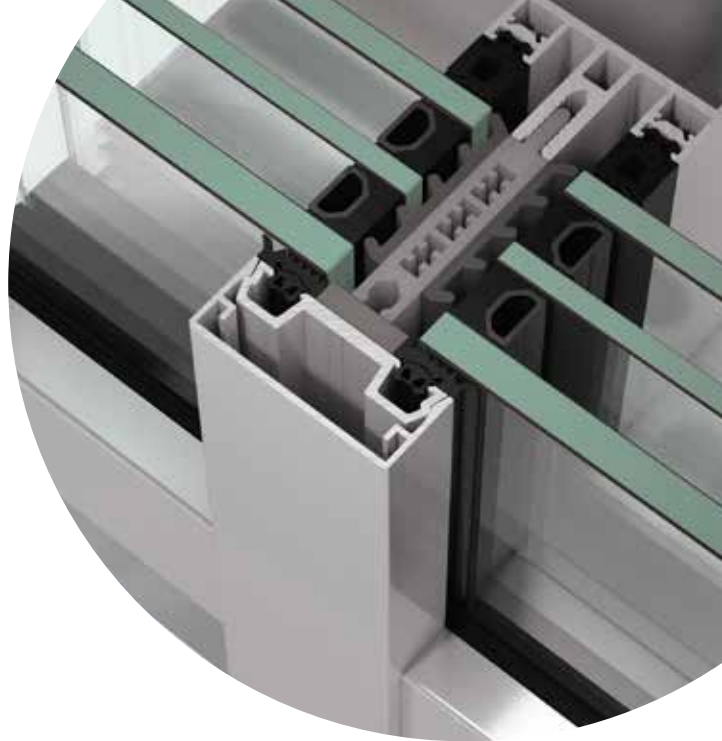
- High UV Resistance
- Non-Corrosive
- Dimensionally Stable
- Low maintenance
- Compatible with powder - coated or anodized aluminium

TYPICAL APPLICATIONS

- Curtain Wall Systems
- Ventilated Facades
- Structural Glazing
- Window and Door Frames
- Cladding Interfaces

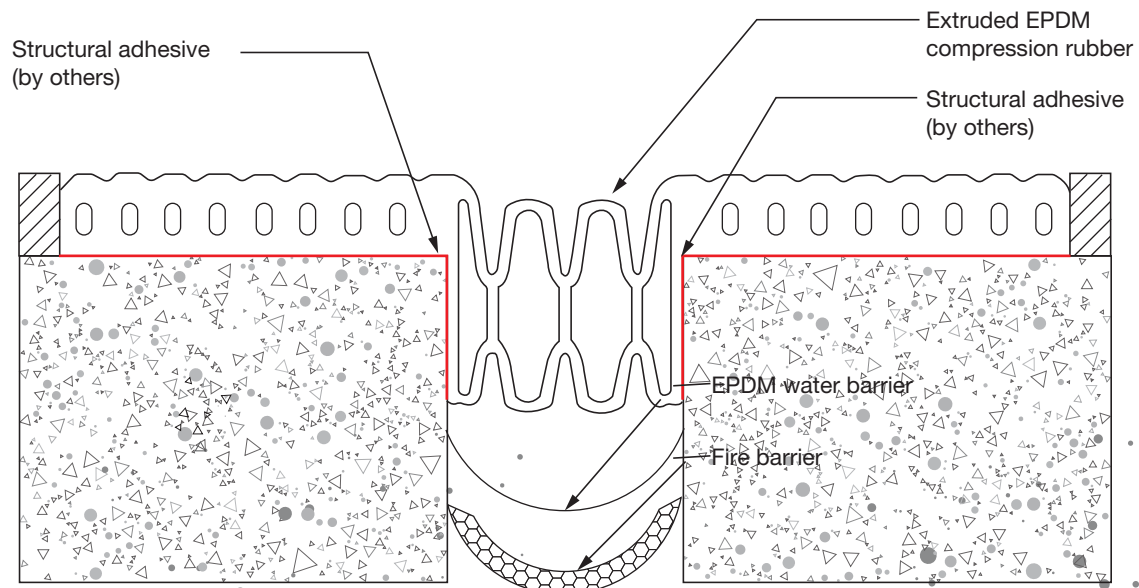
CUSTOMIZATION OPTIONS

- Custom shapes and extrusion profiles
- Color matching to aluminium systems (Real Palette)
- Co-Extrusion with soft PVC for sealing Lips
- Fire-Retardant or UV-Stabilized formulations



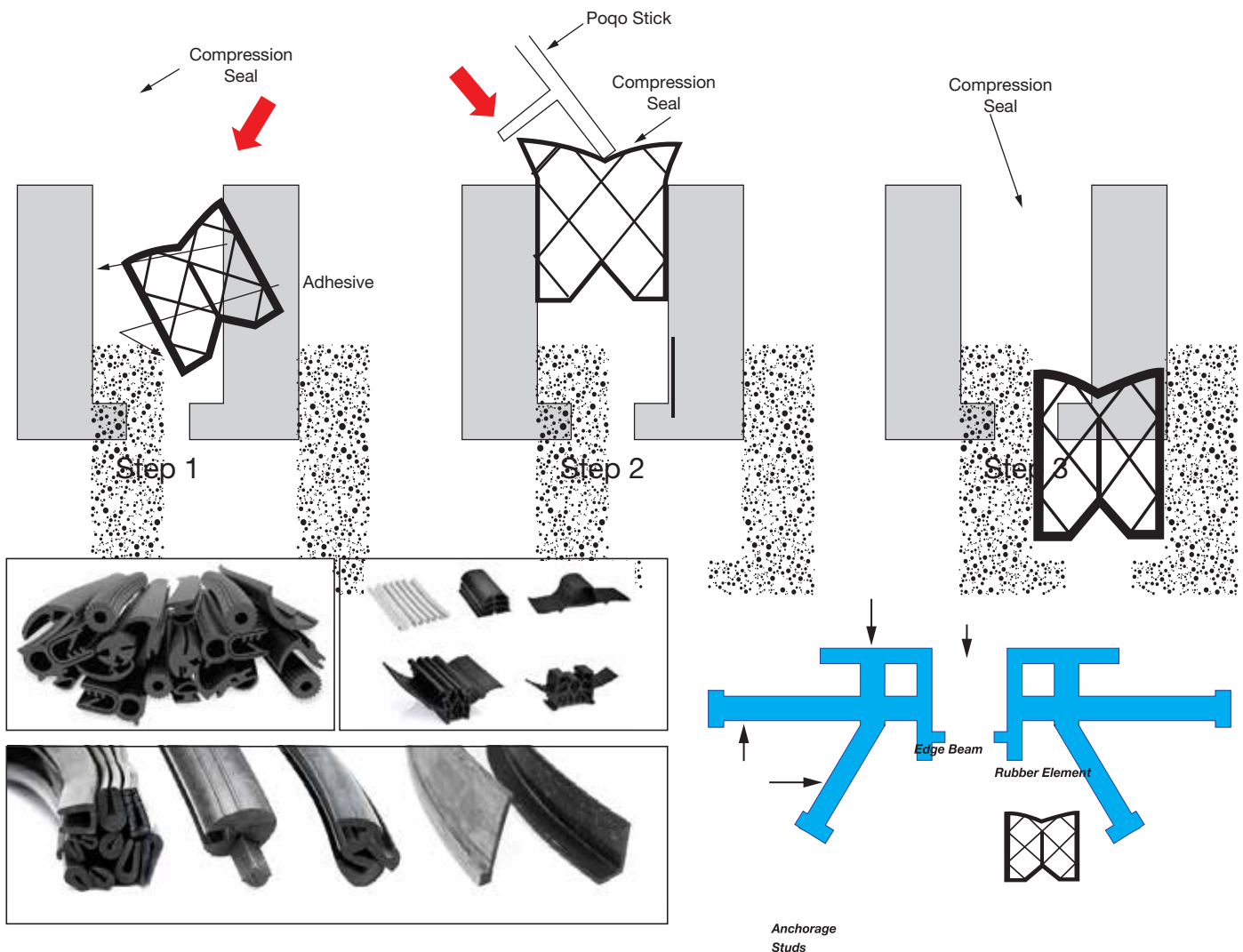
COMPRESSION JOINTS (AKA CONTRACTION OR CONTROL JOINTS)

Control where cracking occurs due to shrinkage or contraction of materials - especially in concrete.



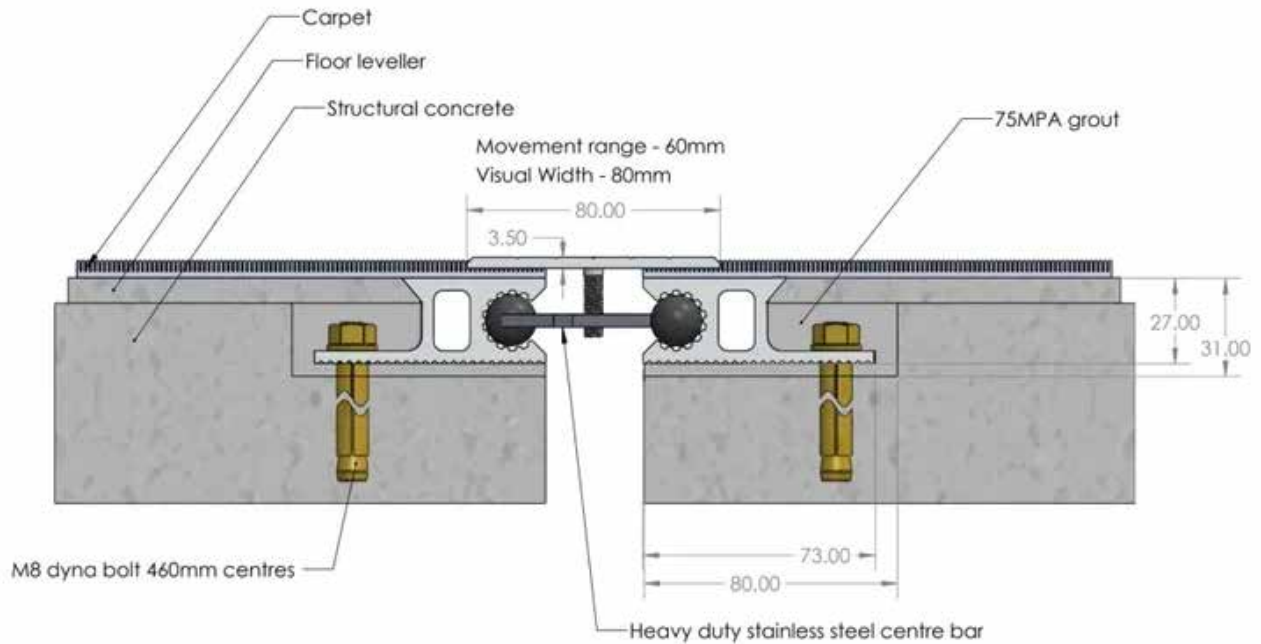
USES:-

- Concrete Pavements, slabs,
- Walls flooring systems



EXPANSION JOINTS

Allow expansion of building materials due to heat, moisture or other factors without causing cracking or structural damage.



USED IN:

- Long Concrete Slabs or Pavements
- Bridges
- Building Facade and Roofs
- Pipelines



EPDM PROFILES (ETHYLENE PROPYLENE DIENE MONOMER)

EPDM is a with excellent weather, UV and ozone resistance, making it ideal for use in facade gaskets and sealing profiles.



FUNCTIONS:

- Air and water tightness at curtain wall or cladding Joints.
- Flexible Under Temperature variations.
- Used around window frames, curtain wall mullions/Transoms and expansion joints



FORMS:

- Gaskets for glazing and curtain wall systems
- Membrane Sheet for backing waterproof Barriers.



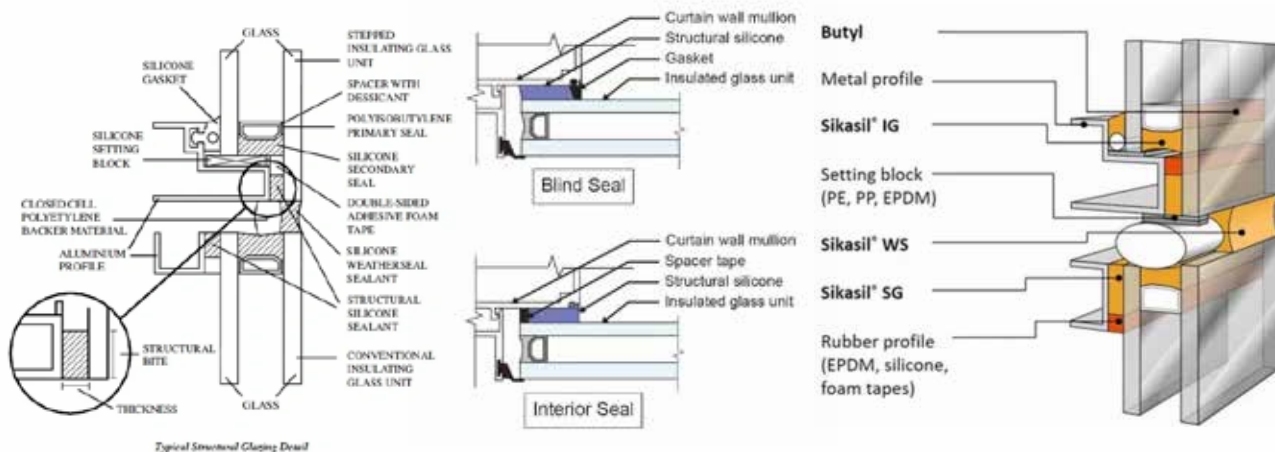


SILICONE PROFILES

Silicon Profiles are elastic, Sealants or Gaskets with high UV, weather and temperature resistance, used in facade applications for long-term flexibility and adhesion.

FUNCTIONS:

- Sealing between dissimilar materials (metal-glass, glass-glass).
- Used in structural glazing, unitized facades and point-fixed glazing systems.
- High durability over 20+ years in exposed conditions.



FORMS:

- Preformed Gaskets
- Extruded profiles
- Sealants based applied via gun



EPDM WALL GUARDS



Wall guards made from EPDM rubber are mounted on walls in parking garages or areas prone to vehicle contact. They protect walls and vehicles from scratches, dents or paint transfer during parking maneuvers.



FUNCTIONS:

- Made from durable, weather-resistant EPDM rubber.
- High Impact resistance and flexibility.
- Often Installed on columns, walls or basement parking levels.

INSTALLATION:

- Fixed using mechanical fasteners or adhesive
- Installed Horizontally at Door Height or Bumper Height.

CORNER GUARD (EPDM OR RUBBER)

Corner guards protect edges of pillars, walls and columns from vehicle contact. Especially useful in tight parking spaces.



FEATURES:

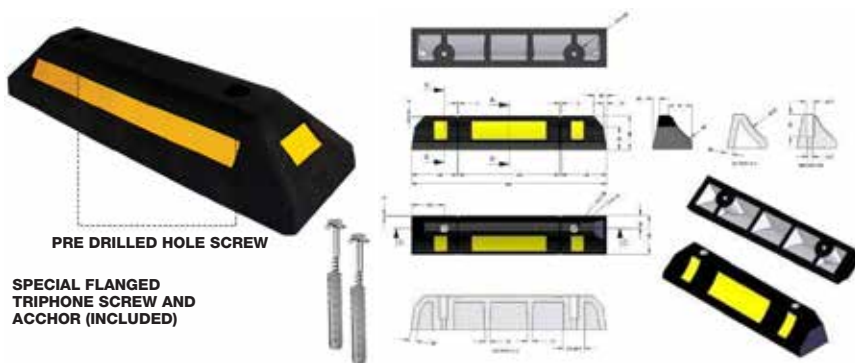
- Made from EPDM rubber, PVC, or Hard Rubber
- Often include yellow reflective strips for visibility.
- Absorb Impact to reduce damage to vehicles and structures.

INSTALLATION:

- Installed using anchor bolts or strong adhesive.
- Typically placed at height of bumpers and corners.

WHEEL STOPPER (WHEEL CHOCK / PARKING BLOCK)

A wheel stopper is low barrier used to prevent vehicle from going beyond a designated parking space.



FEATURES:

- Materials: Rubber, EPDM, Concrete or Plastic.
- Usually black with yellow reflective strips.
- Prevent over-travel or collision with walls, fences or other cars.

DIMENSIONS:

- Common size: 1800mm x 150mm x 100mm
- Positioned to stop front or rear wheels.

INSTALLATION:

Anchored with bolts into concrete or asphalt.



SPEED HUMPS / SPEED BUMPS

Raised sections on roadways or in parking lots that force drivers to reduce speed.



FEATURES:

- Made from rubber, plastic or asphalt.
- Height: ~50mm to 75mm (Speed Bumps)
- Length: ~30mm to 1000mm (Speed Humps)
- Reflective Tape or Embedded Reflectors for visibility.

INSTALLATION:

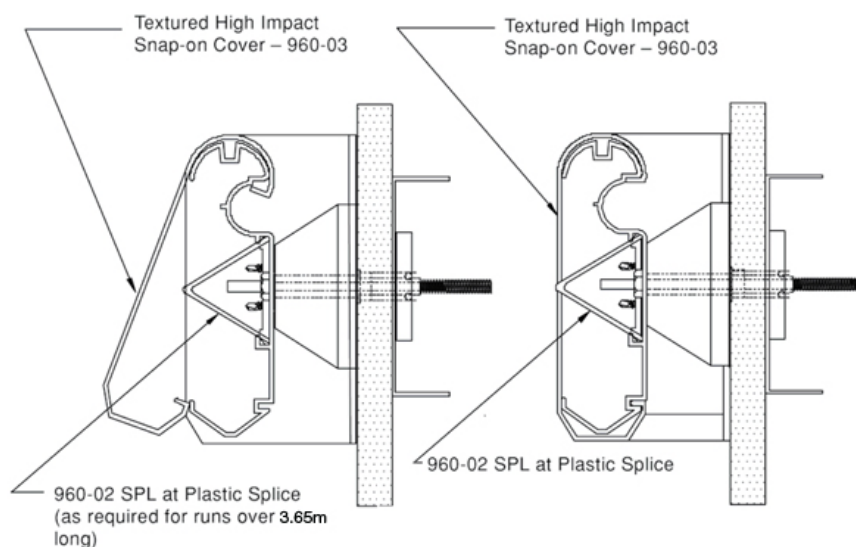
- Anchored with bolts into the road surface.
- Modular Types can be removed or relocated.

HOSPITAL WALL GUARDS (BUMPER RAILS)

Wall guards in Hospitals are horizontal protective rails mounted to walls at specific heights to absorb impact from beds, wheel chairs, carts, and trolleys.

KEY FUNCTIONS:

- Prevent wall damage from hospitals equipment
- Maintain a clean, professional appearance.
- Improve hygiene (by reducing damage that can harbor bacteria).



TYPICAL APPLICATIONS:

- Hallways
- Operating Areas
- Patient Rooms
- Emergency Zone



DIMENSIONS:

- Common heights: 100mm to 200mm
- Length: Often comes in 3m sections
- Mounted 800-900mm above floor level (Adjustable depending on area)

HOSPITAL CORNER GUARDS

Corner guards are L - shaped or U - shaped profiles that protect external wall corners from impact in high-traffic healthcare environments.



KEY FUNCTIONS:

- Prevents chips and cracks at corners.
- Protect vulnerable drywall or plaster finishes.
- Maintain Hygiene by reducing wall surface damage.

MOUNTING OPTIONS:

- Surface-Mounted (Screwed or adhesive)
- Flush-mounted (Recessed in Drywall)
- Available with self-adhesive backing or pre drilled holes.



DIMENSIONS:

- Wings: 50mm x 50mm, 75mm x 75mm
- Thickness: 1.5mm - 2mm
- Height: 1.2m to Full height (2.4m)

PVC SKIRTING (VINYL SKIRTING BOARD)



PVC Skirting provides a neat finish between the floor and the wall, while protecting the wall from impact, moisture and dirt.

FEATURES:

- Made from rigid or flexible PVC.
- Water and Termite resistant.
- Easy to clean and install
- Available in various colors and profiles.

COMMON SIZES:

- Height: 50mm, 75mm, 100mm
- Thickness: 1.5 - 3mm

PVC COVE FORMER (COVE FILLET)

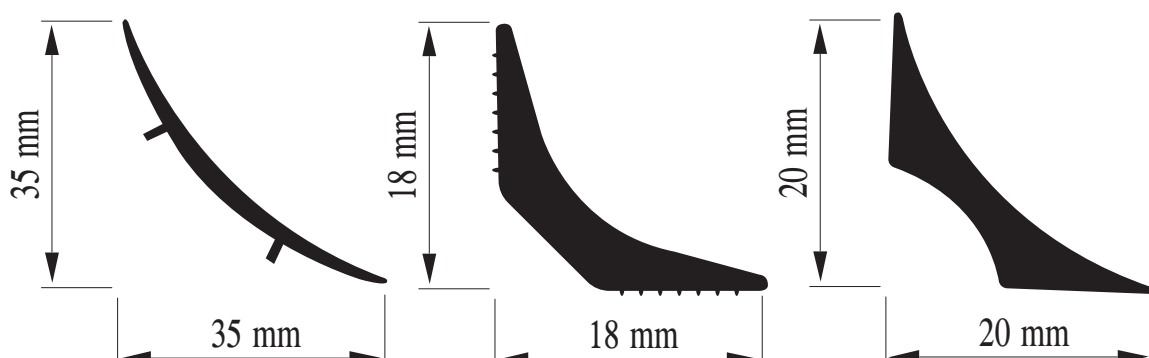
A PVC cove former is a semi-circular or triangular PVC profile installed at the junction between floor and wall to allow vinyl flooring to curve upward. Common in hygienic spaces like hospitals or labs.

BENEFITS:

- Helps Maintain a coved skirting profile.
- Facilitates cleaning by eliminating sharp floor to wall corners.
- Supports Floor vinyl to be wrapped up the wall.

COMMON SIZES:

- Customized sizes are available
- 20mm x 20mm
- 30mm x 30mm





CAPPING STRIP (PVC CAPPING)

Used in conjunction with cove former to cap the top edge of vinyl Flooring that curves up the wall. It hides the edge and provides a clean finish.

APPLICATION:

- Installed above vinyl sheet wall finish
- Common in Hospitals, commercial kitchens and wet rooms.

INSTALLATION:

- Fixed to wall using contact adhesive or screws.

PVC STAIR NOSING (STAIRNOSE)

Stair Nosings Provide Protection For Stair Edges, Enhance Safety (Anti-Slip) and give a finishes look.

TYPES:

- Bullnose, Square, or shaped profiles.
- With anti-slip grooves or abrasive inserts.
- Can be used with vinyl, ceramic or concrete stairs.

COMMON SIZES:

- Width: 50 - 70 mm
- Depth: 20 - 40 mm
- Customized Sizes are also available.



TILE TRIM (EDGE TRIM)

Tile trims are edge protection profile used at the junction of tiled surfaces-on corners, Transitions or exposed tile edges.

BENEFITS:

- Protects tile edges from chipping.
- Improves aesthetics at external corners or finish lines.
- Available in PVC, Aluminum, Stainless Steel.

TYPES:

- L-shaped (Straight Edge)
- Round (Quarter Round or Bullnose)
- T-joint for expansion or transitions



BOAT PROFILES (RUB RAILS, FENDER PROFILES)

PURPOSE:

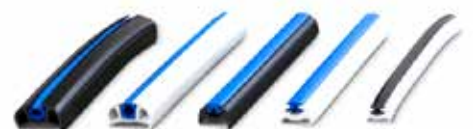
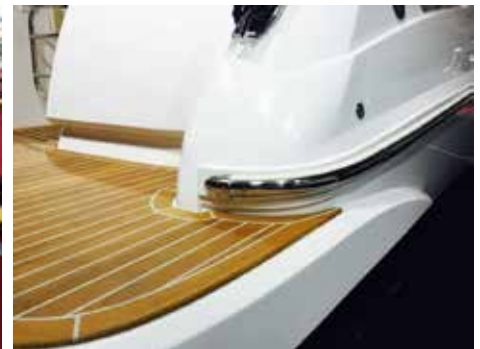
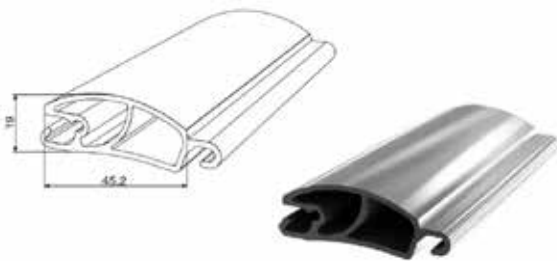
- Protect boat hull from scratches and dents.
- Act as a buffer zone between boats or against pipes.
- Often referred to as rub rails, gunwale trims or rubber bumpers.

MATERIALS:

- PVC (Rigid or semi-rigid)
- TPV (Thermoplastic vulcanizate - more flexible and UV-resistant)
- EPDM rubber (Used for heavy-Duty marine applications)

COMMON TYPES:

- Flat or angled rub rails
- Insert rub rails with decorative or colored inlays
- U-shaped profiles for edge protection
- Clip-on or screw-in types



**EXCELLENCE
IN EVERY
STRUCTURE**



EMERON AURA BUILDING MATERIALS TRADING LLC

www.emeronaura.com

Tel: +971 4 880 7719 | P.O.Box: 19407

Al Shams Warehouse – 05 15th St – Al Qusais Ind. Fourth – Dubai
Dubai – United Arab Emirates